

Contents page

Sheet 1:	Key points arising from the data
Sheet 2:	List of schools in Inner West areas
Sheet 3:	Foundation Stage
Sheet 4:	Key Stage 1
Sheet 5:	Key Stage 2
Sheet 6:	Key Stage 1-2 Progress
Sheet 7:	Primary Attendance
Sheet 8:	Secondary Outcomes (Attainment, Progress, Attendance, Exclusions)
Sheet 9:	Secondary prior attainment and estimates of future outcomes
Sheet 10:	Secondary context and demography
Sheet 11:	Secondary parental preference (admissions)
Map 1	Locations of schools in Inner West areas
Map 2	Residences of Y7 students at Inner West secondary schools
Map 3	Residences of Y7-11 students at Leeds West Academy
Map 4	Residences of Y7-11 students at Swallow Hill Community College
Map 5	Residences of Y7-11 students at The Farnley Academy

Version number:	V1.1
Date produced:	Apr-13
Created by:	Ian Stokes, Nev Smith, Dave Lawrence, Nick Strudwick
Contact details:	ian.stokes@leeds.gov.uk
Filepath:	L:\PMIT! Research and Information\Requests\2013-'14\Learning Improvement\Gail Webb\Inner West Investigation
Status:	Final
Protective marking:	Not protectively marked

Key Points arising from the analysis of the data:

- Patterns identified in the data provide a strong indication that outcomes for schools in the Inner West Area Committee (especially in the secondary phase), cannot be considered in isolation. Schools in the Inner West Family of Schools also need to be included in the analyses in order to gain a more complete picture of the issues.
- Children enter primary schools in the area with generally much lower than average levels of development and outcomes remain low at Key Stage 1.
- At Key Stage 2 all primary schools in the area achieve rates of progress which are in line with or exceeding rates of progress seen nationally, however attainment levels vary .
- Primary Attendance has improved significantly in recent years and is generally in line with or above national averages.
- Key Stage 4 attainment on the key 5+A*-C inc E&M measure has improved dramatically at Secondary School 1 and is now close to the national average. Attainment on this measure at Secondary School 2 has not seen significant improvement and remains below floor target.
- Pupil progress at Secondary School 1 is variable, with overall Value Added being very positive, but with issues around expected progress in maths. Pupil progress at Secondary School 2 is very poor on all measures.
- Attendance rates are slightly below national average at Secondary School 1, but significantly below national at Secondary School 2. Secondary School 1 has significantly reduced the number of persistent absentees, while numbers of persistent absentees remain well above national averages at Secondary School 2. Numbers of fixed term exclusions at Secondary School 2 are significantly higher than at Secondary School 1, but numbers of permanent exclusions are more similar, with Secondary School 1 having the higher number.
- The prior attainment profiles of the current cohorts at Secondary School 2 are generally much lower than those of Secondary School 1. Estimates of future GCSE outcomes (based on pupils at each school making "normal" progress) are much lower at Secondary School 2 than at Secondary School 1.
- Levels of deprivation are similar at Secondary School 1 Secondary School 2 (both well above average). Secondary School 2 has a much higher than average proportion of students with English as an additional language, with a large representation of students from Pakistani, Black African and Gypsy/Roma/Traveller heritages. Secondary School 1 has a much smaller, below average, proportions of students from BME and EAL backgrounds.
- Secondary School 2 are popular with parents . Over 95% of pupils allocated a place under the most recent admissions round had that school as their first preference, and all places are filled. At Secondary School 2 only a third of places were filled with 1st preference applications, one fifth of places were auto-allocated by the LA and over a third of places were left unfilled. Secondary School 1 is increasingly attracting pupils from the Armley area who travel past Secondary School 2 in order to get to Secondary School 1. Only 15% of children living nearest to Secondary School 2 choose it as their first preference, compared to 20% who preferred

Inner West area committee learning outcomes

foundation stage outcomes	Page 2
KS1 outcomes	Page 3
KS2 outcomes	Page 4
KS1-2 progress	Page 5
Primary attendance	Page 6
Secondary outcomes	Page 7
Secondary context and demographic	Page 8
Map 1	Page 9
Map2	Page 10
Map 3	Page 11
Map 4	Page 12
Map 5	Page 13

Foundation Stage Outcomes

Inner West Area Committee	2010	2011	2012	Auto-Rating
Primary School 1	26.9	72.0	57.1	
Primary School 2	50.0	44.1	56.3	
Primary School 3	24.3	37.2	55.3	
Primary School 4	59.4	57.1	55.2	
Primary School 5	63.3	73.1	89.7	
Primary School 6	66.7	79.2	62.1	
Primary School 7	35.8	40.4	44.1	
Primary School 8	53.3	53.8	67.7	
Primary School 9	43.3	55.0	48.3	
Primary School 10	32.1	37.7	39.1	
Primary School 11	51.7	43.3	46.7	
Primary School 12	43.3	37.9	44.4	
Primary School 13	62.1	60.0	51.8	
Primary School 14	49.2	56.7	59.3	
Primary School 15	42.4	46.6	54.4	

National	55.6	59.0	64.0
-----------------	------	------	------

Source: NCER KEYPAS

Key Stage 1 Outcomes

Inner West Area Committee	Level 2+ Reading			Level 2+ Writing			Level 2+ Maths			Auto- Rating
	2010	2011	2012	2010	2011	2012	2010	2011	2012	
Primary School 1	50.0	60.7	89.5	50.0	60.7	84.2	50.0	60.7	89.5	
Primary School 2	42.4	76.0	92.0	42.4	76.0	88.0	42.4	76.0	100.0	
Primary School 3	72.4	79.5	73.8	82.8	79.5	69.0	72.4	79.5	88.1	
Primary School 4	79.2	77.4	74.2	66.7	77.4	74.2	79.2	77.4	80.6	
Primary School 5	100.0	86.7	86.7	100.0	86.7	86.7	100.0	86.7	83.3	
Primary School 6	91.7	91.7	89.7	87.5	91.7	96.6	91.7	91.7	100.0	
Primary School 7	67.4	69.2	76.6	50.0	69.2	61.7	67.4	69.2	76.6	
Primary School 8	80.0	80.8	93.5	64.0	80.8	93.5	80.0	80.8	93.5	
Primary School 9	79.7	78.0	74.1	71.2	78.0	74.1	79.7	78.0	89.7	
Primary School 10	67.6	76.4	73.3	64.9	76.4	63.3	67.6	76.4	73.3	
Primary School 11	86.2	92.6	86.7	86.2	92.6	86.7	86.2	92.6	83.3	
Primary School 12	66.7	80.8	73.1	55.6	80.8	73.1	66.7	80.8	80.8	
Primary School 13	71.4	80.0	72.4	71.4	80.0	65.5	71.4	80.0	86.2	
Primary School 14	89.2	92.2	85.0	83.8	92.2	78.3	89.2	92.2	86.7	
Primary School 15	88.9	92.7	81.0	79.6	92.7	74.1	88.9	92.7	81.0	
National	84.6	85	87	80.8	81	83	89.3	90	91	

Source: NCER KEYPAS

Key Stage 2 Outcomes

Inner West Area Cttee	Level 4+ English			Level 4+ Maths			Level 4+ English and Maths			Auto-Rating
	2010	2011	2012	2010	2011	2012	2010	2011	2012	
Primary School 1	-	65.0	91.7	-	50.0	83.3	-	40.0	83.3	
Primary School 2	-	67.7	75.0	-	73.5	82.1	-	64.7	71.4	
Primary School 3	75.0	63.0	75.0	69.4	63.0	67.5	66.7	55.6	60.0	
Primary School 4	-	76.7	95.5	-	90.0	95.5	-	76.7	95.4	
Primary School 5	-	95.7	63.2	-	95.7	73.7	-	91.3	63.2	
Primary School 6	-	69.6	88.9	-	69.6	70.4	-	47.8	70.4	
Primary School 7	-	83.9	74.2	-	61.3	77.4	-	54.8	71.0	
Primary School 8	-	84.0	94.4	-	88.0	100.0	-	80.0	94.4	
Primary School 9	75.9	69.5	66.0	64.8	76.3	62.3	63.0	66.1	58.5	
Primary School 10	-	87.5	92.7	-	90.0	92.7	-	82.5	92.7	
Primary School 11	67.7	89.7	93.1	61.3	75.9	82.8	54.8	72.4	82.8	
Primary School 12	62.1	72.4	77.4	69.0	75.9	67.7	51.7	69.0	64.5	
Primary School 13	-	80.0	81.3	-	70.0	68.8	-	70.0	68.8	
Primary School 14	-	71.7	82.0	-	69.8	76.0	-	64.2	68.0	
Primary School 15	67.9	87.2	86.4	77.4	78.7	70.5	60.4	74.5	68.2	
National Results	80	82	85	79	80	84	73	74	80	

KS1-2 Progress

Inner West area Committee	Expected Progress in English			Expected Progress in Maths			VA Score			Auto- Rating
	2010	2011	2012	2010	2011	2012	2010	2011	2012	
Primary School 1	-	70.0	90.9	-	70.0	90.9	-	97.8	100.7	
Primary School 2	-	85.3	85.2	-	85.3	85.2	-	101.5	101.0	
Primary School 3	90.9	77.8	89.5	90.9	77.8	89.5	-	98.9	98.7	
Primary School 4	-	92.9	100.0	-	92.9	100.0	-	100.9	102.0	
Primary School 5	-	100.0	88.2	-	100.0	88.2	-	101.9	100.4	
Primary School 6	-	82.6	96.3	-	82.6	96.3	-	100.0	99.7	
Primary School 7	-	100.0	100.0	-	100.0	100.0	-	100.4	101.5	
Primary School 8	-	80.0	100.0	-	80.0	100.0	-	99.8	101.1	
Primary School 9	88.2	89.8	90.6	88.2	89.8	90.6	-	100.8	100.0	
Primary School 10	-	94.4	92.5	-	94.4	92.5	-	104.5	105.3	
Primary School 11	85.2	93.1	96.6	85.2	93.1	96.6	-	99.5	99.1	
Primary School 12	82.1	82.1	90.0	82.1	82.1	90.0	-	98.4	99.1	
Primary School 13	-	100.0	93.8	-	100.0	93.8	-	99.5	101.2	
Primary School 14	-	94.2	87.8	-	94.2	87.8	-	99.4	99.1	
Primary School 15	84.6	93.6	90.7	84.6	93.6	90.7	-	99.6	99.5	

National Results	83	84	84	84	82	83			
------------------	----	----	----	----	----	----	--	--	--

Source: DfE Performance Tables

Primary Attendance

Inner West Area Cttee	2009-2010 ht1-5	2010-2011 ht1-5	Attendance			Persistent Absence (15%)		
			2011-2012 ht1-5	2009-2010 ht1-5	2010-2011 ht1-5	2011-2012 ht1-5		
Primary School 1	93.6	93.1	94.6	10.6	9.4	2.9		
Primary School 2	93.2	95.6	96.3	10.9	2.3	1.1		
Primary School 3	94.1	94.7	95.9	9.7	4.2	3.9		
Primary School 4	94.2	94.2	94.6	4.0	4.9	5.2		
Primary School 5	93.7	94.7	94.8	2.3	3.8	5.1		
Primary School 6	95.3	95.7	96.3	2.5	1.9	2.4		
Primary School 7	92.7	93.8	95.3	9.9	3.6	4.2		
Primary School 8	94.3	94.5	96.6	6.0	5.1	3.8		
Primary School 9	93.1	93.4	94.4	9.8	7.4	5.2		
Primary School 10	94.2	93.2	95.8	6.2	6.3	5.6		
Primary School 11	95.9	96.8	97.3	1.1	0.0	0.0		
Primary School 12	93.5	93.9	95.0	8.5	6.4	5.0		
Primary School 13	94.0	95.7	95.5	8.0	3.4	2.8		
Primary School 14	94.2	95.4	96.0	5.3	1.6	3.7		
Primary School 15	94.0	94.4	94.9	5.9	4.4	4.9		
National Results			94.8	95	95.6	4.4	3.9	3.1

Secondary Outcomes

Key Stage 4 Attainment			5+ A*-C			5+ A*-C E&M			EBACC			5+ A*-G			Any Qualifications			Auto-Rating
FOS	AC	SCHOOL	2010	2011	2012	2010	2011	2012	2010	2011	2012	2010	2011	2012	2010	2011	2012	
W FOS	IW AC	Secondary School 1	68	81	95	37	44	57		2	3	93	96	97	99	99	99	
IW FOS	IW AC	Secondary School 2	51	63	71	24	31	28		3	6	86	88	90	97	99	99	
England - State Funded			76	81	83	55	58	59	15	15	16	95	95	96	99	99	99	

Source: DfE Performance Tables

Key Stage 4 Progress			Expected Progres Eng			Expected Progres Mat			DfE Value Added									Auto-Rating
FOS	AC	SCHOOL	2010	2011	2012	2010	2011	2012	2010	2010 LC	2010 UC	2011	2011 LC	2011 UC	2012	2012 LC	2012 UC	
W FOS	IW AC	Secondary School 1	73	80	83	39	55	59	1016.1	1006	1026.2	1013.5	1002.2	1024.9	1024.8	1015	1034.6	
IW FOS	IW AC	Secondary School 2	36	42	43	27	36	33	940	932.9	947.2	955.6	947.8	963.3	962.8	955.4	970.1	
England - State Funded Mainstream			70.4	73	69.2	62.9	65.9	69.8	1000.0			1000.0			1000.0			

Source: DfE Performance Tables

Key Stage 5 Outcomes			APS per student			APS per Entry			2+A*-E			3+A*-E			AAB in Facilitating Subject			Auto-Rating
FOS	AC	SCHOOL	2010	2011	2012	2010	2011	2012	2010	2011	2012	2010	2011	2012	2010	2011	2012	
W FOS	IW AC	Secondary School 1	688.2	801.6	863.8	210.2	229.8	217.6	97.6	93.2	98.0	76.2	81.8	97.0			0	
IW FOS	IW AC	Secondary School 2	522.3	570.0	503.3	160.4	165.3	169.8	75.4	82.7	82.0	49.1	55.8	59.0			0	
National Results			744.9	746.0	733.0	214.4	216.2	212.8	95	94	94	85	81	84			9	

Source: DfE Performance Tables

Attendance			% Attendance			% Persistent Absence (15%)			% Unauthorised Absence			Auto-Rating
FOS	AC	SCHOOL	2010	2011	2012	2010	2011	2012	2010	2011	2012	
W FOS	IW AC	Secondary School 1	89.6	92.3	93.2	17.5	9.7	7.5	5.5	3.6	2.6	
IW FOS	IW AC	Secondary School 2	87.3	88.2	89.2	21.4	20.7	19.5	6.5	5.9	6.1	
National Results			93.1	93.5	94.3	9.2	8.4	6.8	1.5	1.4	1.3	

Source: DfE Performance Tables

Exclusions			Fixed Term Exclusions			Permanent Exclusions		
FOS	AC	SCHOOL	2010	2011	2012	2010	2011	2012
W FOS	IW AC	Secondary School 1	78	46	60	3	2	4
IW FOS	IW AC	Secondary School 2	308	158	248	2	0	2
Leeds Total			4286	3824	3445	57	44	26

Source: Exclusions notifications from schools, Synergy, April 2013

Secondary Context and Demography

Free School Meal eligibility	Number of pupils on roll	Non Free School Meals	Number of pupils in receipt of FSM	% of FSM
Secondary School 2	1195	726	469	39.2
Secondary School 1	1101	704	397	36.1

Source: October 2012 School Census

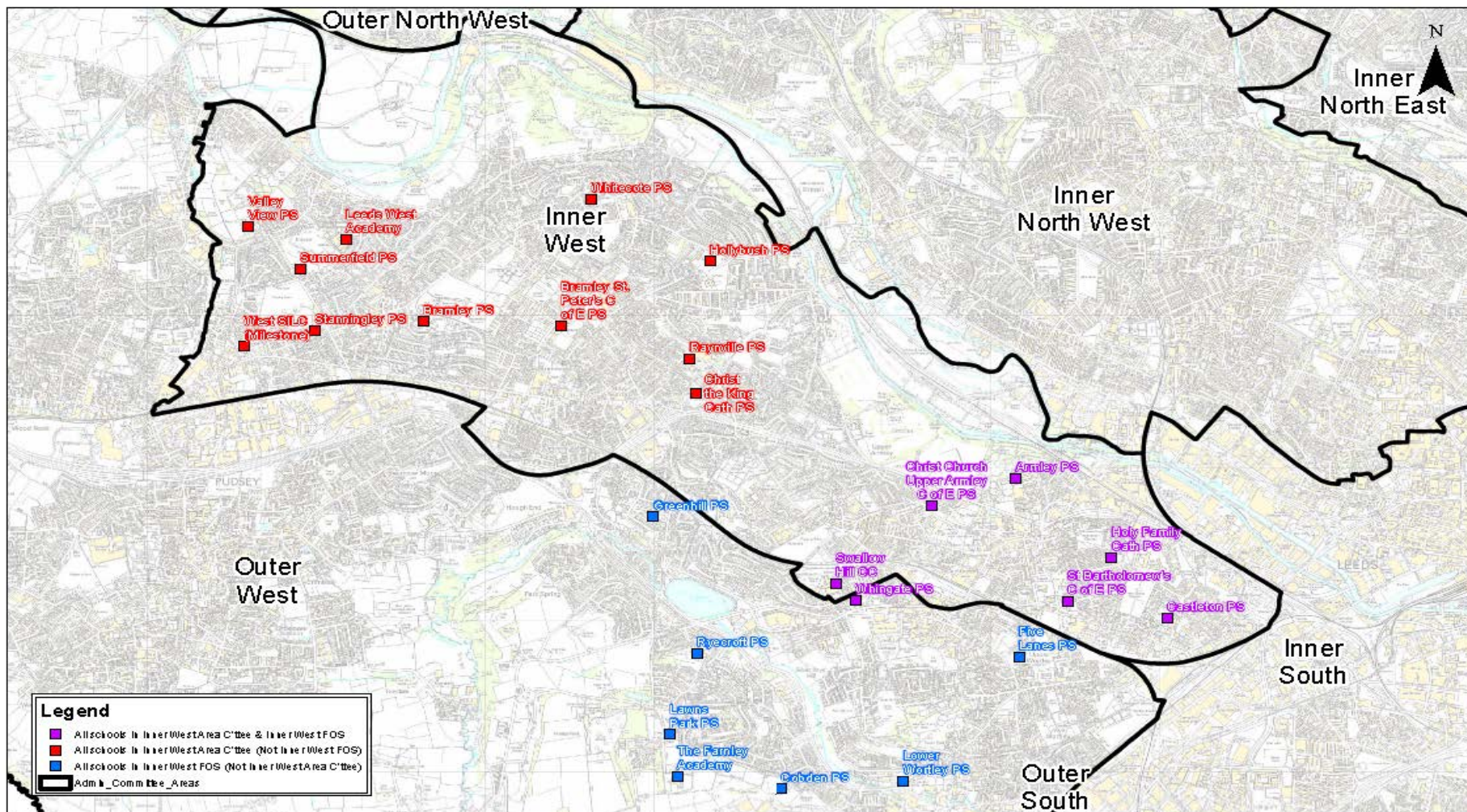
ACORN classifications	Pupil No. On Roll	Wealthy Achievers	Urban Prosperity	Comfortably Off	Moderate Means	Hard-Pressed	Unclassified	Blank	% Wealthy Achievers	% Urban Prosperity	% Comfortably Off	% Moderate Means	% Hard-Pressed	% Unclassified	% Blank
Secondary School 2	1195	20	56	203	315	591		10	1.7	4.7	17.0	26.4	49.5	0.0	0.8
Secondary School 1	1101	17	16	212	198	643		15	1.5	1.5	19.3	18.0	58.4	0.0	1.4

Source: October 2012 School Census

Pupils with English as an additional language	Number of pupils on roll	English as an Additional Language	English or believed to be English	Unknown/information not obtained	% EAL	% English or believed to be English	% Unknown / information not obtained
Secondary School 2	1195	261	934	0	21.8	78.2	0.0
Secondary School 1	1101	39	1059	3	3.5	96.2	0.3

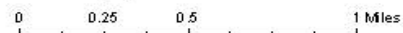
Source: October 2012 School Census

Inner West Schools



© Crown Copyright and database right 2013 Ordnance Survey LA100019667
 This map produced by the Children's Performance Service, Children's Services, Leeds City Council.
 For further information, please call 0113 39 519 41

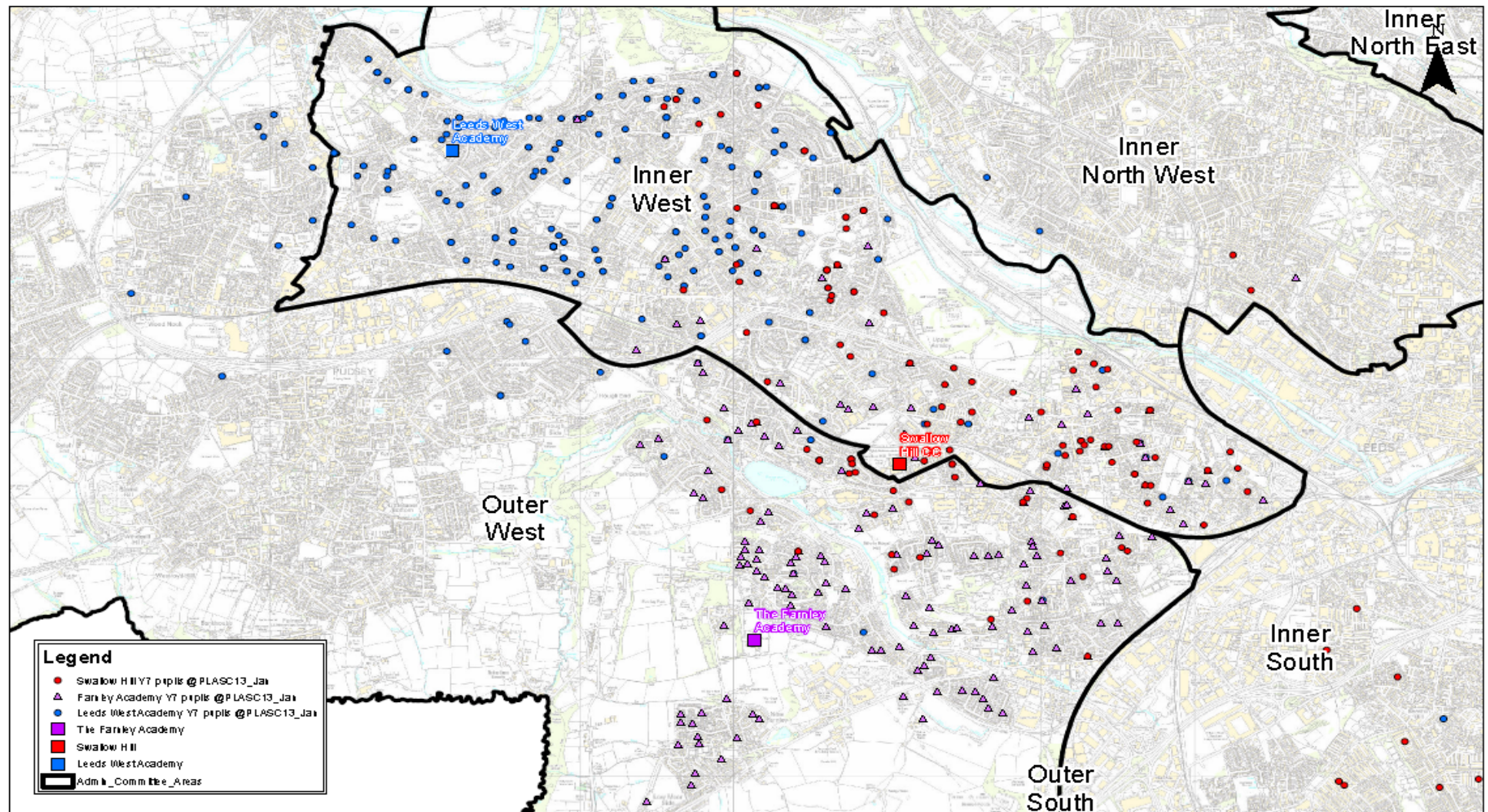
L:\PMT\School Org\Reqs\162013\20130424 - Inner West AC & Inner West FOS



Comments

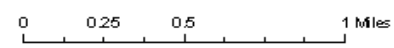
Schools at September 2012

Residential location of Y7 pupils attending Swallow Hill, Farnley Academy and Leeds West.



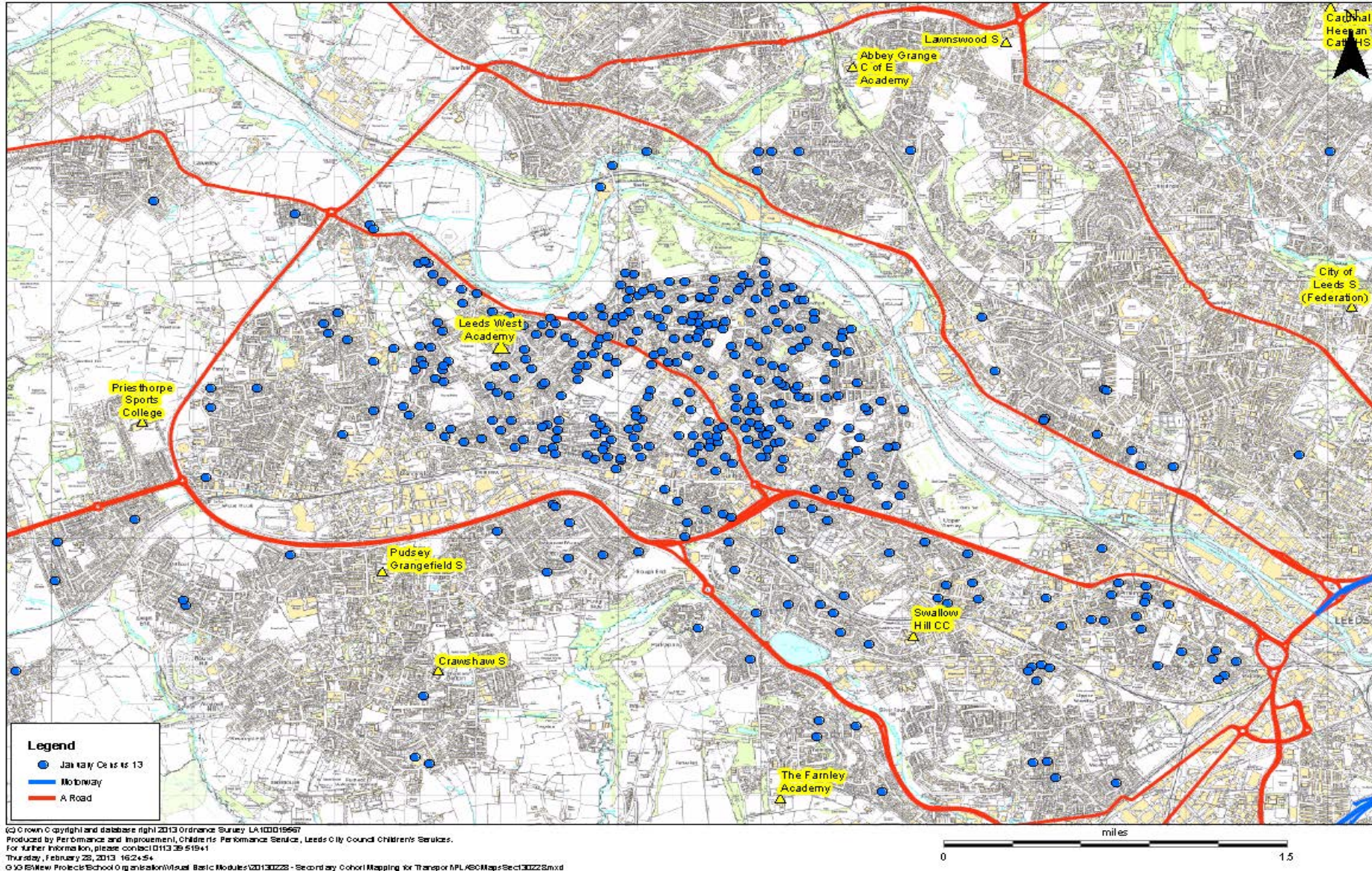
© Crown Copyright and database right 2013 Ordnance Survey 100019567
 This map produced by the Children's Performance Service, Children's Services, Leeds City Council.
 For further information, please call 0113 3951941

L5PMT1School OrigRequs 15201320130424 - Inner West AC & Inner West 1 FO S

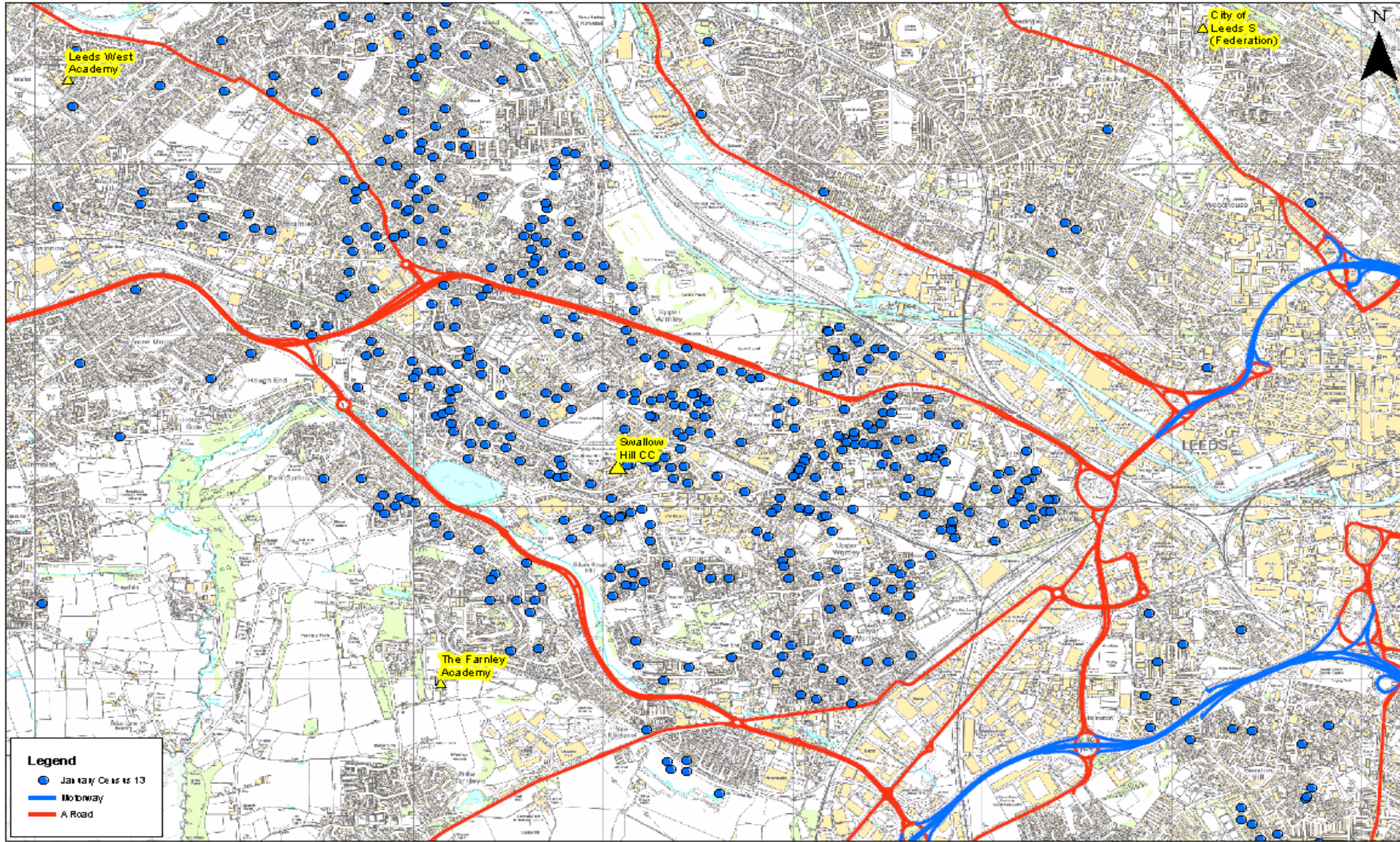


Comments
 Schools at September 2012

Year 7-11 Pupils Attending Leeds West Academy (6906) (January Census 2013)



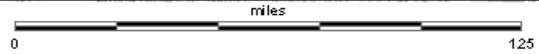
Year 7-11 Pupils Attending Swallow Hill Community College (4852) (January Census 2013)



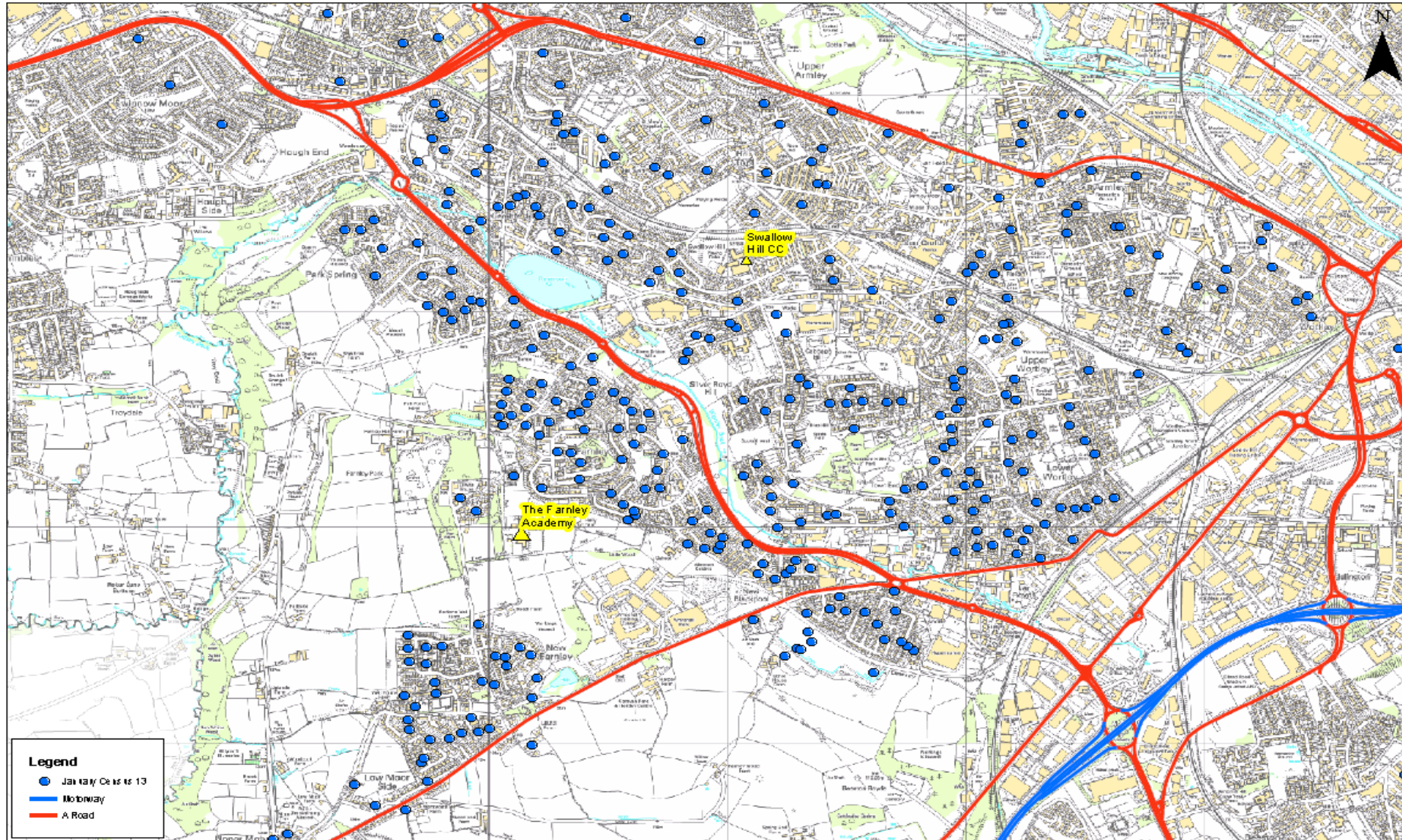
Legend

- Jan 13 Census 13
- Motorway
- A Road

© Crown Copyright and database right 2013 Ordnance Survey 10001997
 Produced by Performance and Improvement, Children's Performance Service, Leeds City Council Children's Services.
 For further information, please contact 0113 25 51941
 Thursday, 7 February 2013 16:24:54
 C:\GIS\New Projects\School Organizational\Visual Basic Modules\20130228 - Secondary Cohort Mapping for Transport\PLASCMaps\Sect30228.mxd



Year 7-11 Pupils Attending The Farnley Academy (4026) (January Census 2013)



© Crown Copyright and database right 2013 Ordnance Survey 100019667
 Produced by Performance and Improvement, Children's Performance Service, Leeds City Council Children's Services.
 For further information, please contact 0113 39 51941
 Thursday, February 28, 2013 16:24:54
 O:\018\New Projects\School Organisation\Visual Basic Modules\20130228 - Secondary Cohort Mapping for Transport\PLA\Map Sect\30222Smxd

